



WHO IS AMERICAN MUNICIPAL POWER

American Municipal Power, Inc. (AMP) owns and operates electric facilities with the purpose of providing generation, transmission and distribution of electric power and energy. It has natural gas steel transmission pipeline systems (4.3 miles total) in Wood, Henry, Auglaize, Crawford and Morrow counties in Ohio, supplied by Trans Canada Energy

WHAT ARE THE SIGNS OF A NATURAL GAS PIPELINE LEAK?

- Blowing or hissing sound
- Dust blowing from a hole in the ground
- Continuous bubbling in wet or flooded areas
- Gaseous or hydrocarbon odor
- Dead or discolored vegetation in a green area
- Flames, if a leak has ignited

WHAT SHOULD I DO IF I SUSPECT A PIPELINE LEAK?

Your personal safety should be your first concern:

- Evacuate the area and prevent anyone from entering
- Abandon any equipment being used near the area
- Avoid any open flames
- Avoid introducing any sources of ignition to the area (such as cell phones, pagers, 2-way radios)
- Do not start/turn off motor vehicles/ electrical equipment
- Leave the affected area and call 911 or contact local fire or law enforcement
- Notify the pipeline company
- Do not attempt to extinguish a natural gas fire
- Do not attempt to operate any pipeline valves

PIPELINE SAFETY

System failures occur infrequently along the nation’s network of interstate natural gas pipeline facilities. Many of these are caused by damage from others digging near the pipeline. We watch for unauthorized digging, but request your help too.

We participate in One-Call Centers and strongly encourage those who are going to dig to call their state One-Call Center or the 811 “Call before you dig” hotline (see below). This phone call gives pipeline companies and owners of other buried utilities a chance to mark the underground facilities in the area before digging begins.



PIPELINE LOCATION AND MARKERS

Pipeline markers are used to indicate the approximate location of a natural gas pipeline and to provide contact information. Aerial patrol planes also use the markers to identify the pipeline route. Markers should never be removed or relocated by anyone other than a pipeline operator.

**EMERGENCY CONTACT:
1-877-603-2922**

PRODUCTS/DOT GUIDEBOOK ID#/GUIDE#:		
Natural Gas	1971	115

**OHIO
COUNTIES OF OPERATION:**

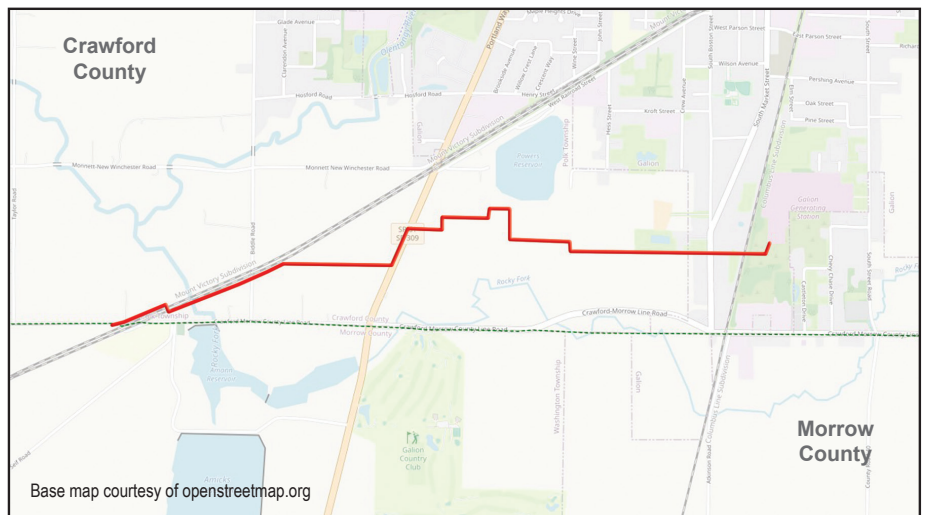
Auglaize	Morrow
Crawford	Wood
Henry	

Changes may occur. Contact the operator to discuss their pipeline systems and areas of operation.

You can also find out where other companies’ pipelines are in your area by going to the National Pipeline Mapping System website at www.npms.phmsa.dot.gov.

EMERGENCY RESPONSE PLANS

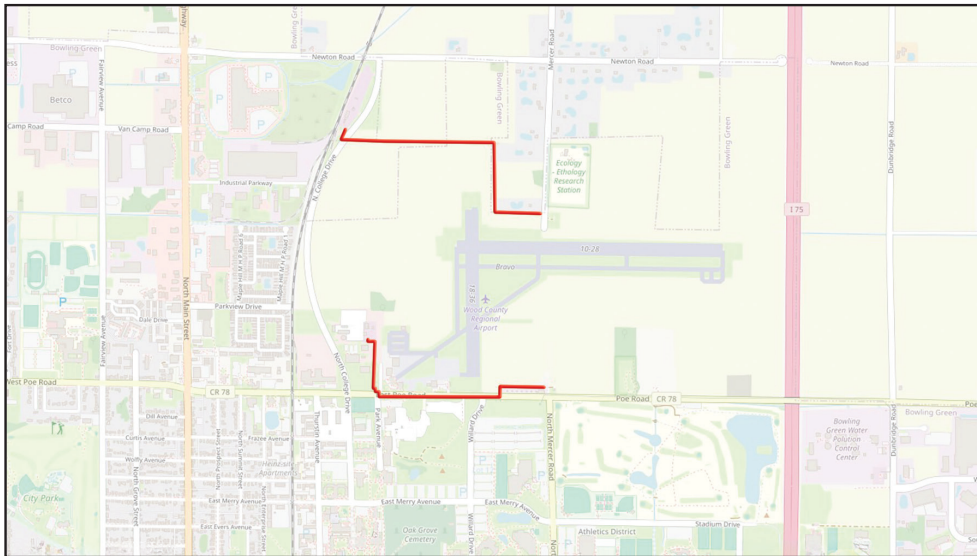
An Emergency Response Plan is developed for each pipeline facility to contain, control and mitigate the various types of emergency conditions/situations that could occur at one of our facilities. For more information regarding American Municipal Power Pipelines emergency response plans and procedures, contact us at 614-965-4842



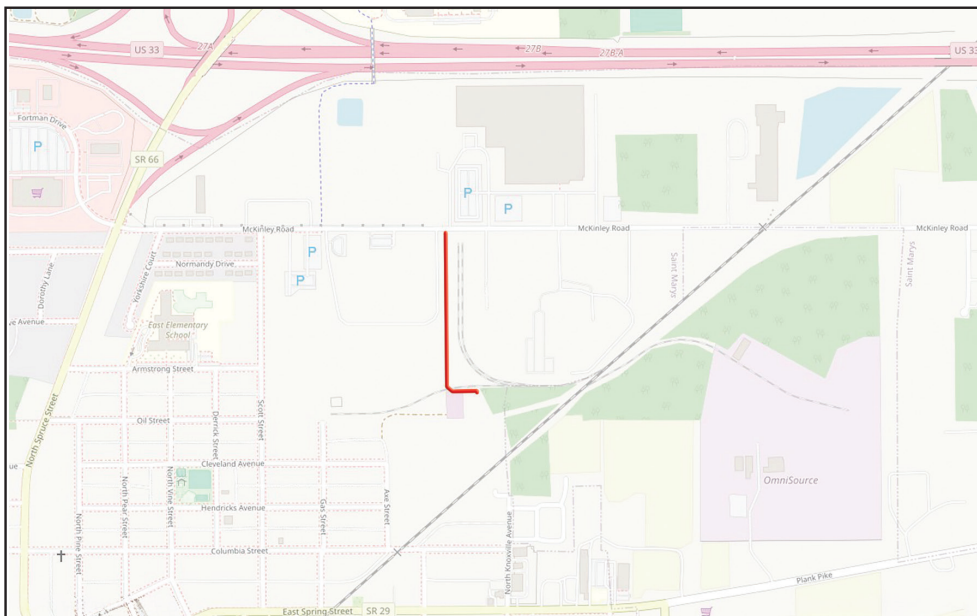
Crawford / Morrow County Map



Henry County Map



Wood County Map



Auglaize County Map